



# IBX BOOST™

PERFECTION OVER THE TOP

FAMOUS NAMES PRODUCTS  
PROUDLY PRESENTS


## IBX BOOST™

THE PERFECT INSIDE AND  
OUTSIDE THE NAIL TEAM!

IBX WORKS IN THE NAIL  
IBX BOOST WORKS ON  
TOP OF THE NAIL



## TABLE OF CONTENTS

- 1 Why IBX BOOST?
- 2 What makes IBX BOOST Different?
-  3 Application of IBX BOOST
- 4 Marketing IBX BOOST
- 5 Other Products Offered By Famous Names Products



# 1

## Why IBX BOOST?



- IBX BOOST is a **FLEXIBLE** and **STRONG** over the top **UNIVERSAL** nail coating that is the perfect compliment to the **IBX SYSTEM**
- IBX BOOST will smooth, strengthen, protect and act as a buffer under Gel Polish.
- The IBX BOOST System can be used as:
  - A natural nail overlay for strength and added protection
  - A protective coating between the natural nail and the Gel Polish Layer.



# 1

Why IBX BOOST?



## BENEFITS TO YOU AND YOUR CUSTOMER

- Exotherm resistant, Less shrinkage, Hypo-Allergenic
- Requires no buffing on the natural nail prior to application
- Cures in one minute LED or UV
- Rebalances are easy, saving you time!



# 2

## Why Is IBX BOOST Different?

- Coating Gels are typically a blend of oligomers, monomers and photo initiators. All three components are necessary for a successful system.
- IBX BOOST has **more oligomers** and fewer **monomers** than other products on the market.
- Why is this important?

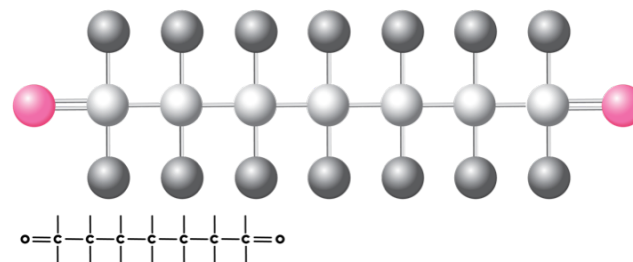


# 2

Why Is  
IBX BOOST  
Different?

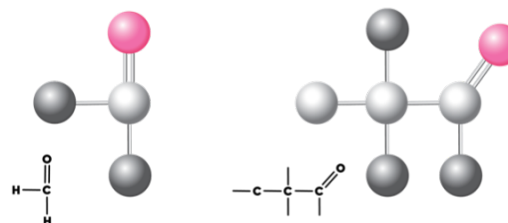
## OLIGOMERS

Oligomers have long chains and two reaction sites



## MONOMERS

Monomers are much smaller, each has a reaction site,  
so they are **more** reactive molecules.



## IBX BOOST HAS A MORE BALANCED NUMBER OF REACTION SITES

Example:



Monomers are  
like matches



Oligomers are  
like lighters

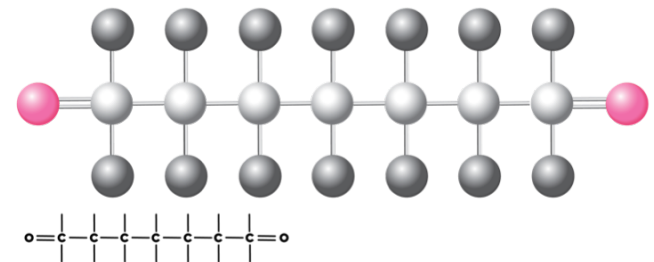


# 2

Why Is  
IBX BOOST  
Different?

## IBX BOOST HAS THE PERFECT BALANCE OF OLIGOMERS AND MONOMERS MEANING A MORE CONTROLLED CURE

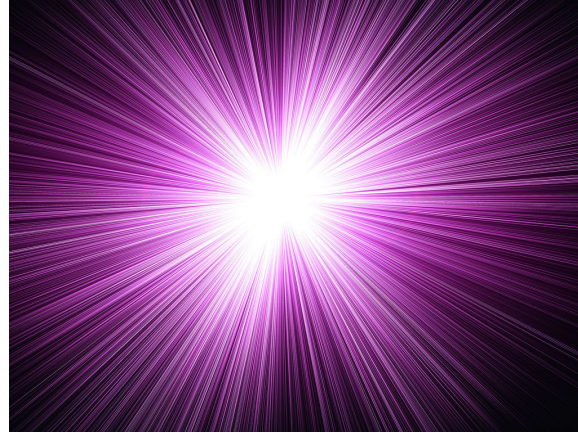
- 1 More complete cure  
IBX BOOST 90% +  
Others are as low as 50%
- 2 Less Shrinkage
- 3 Less Exotherm
- 4 Less Allergic Reactions





# 2

Why Is  
IBX BOOST  
Different?



## PHOTO INITIATORS (PI)

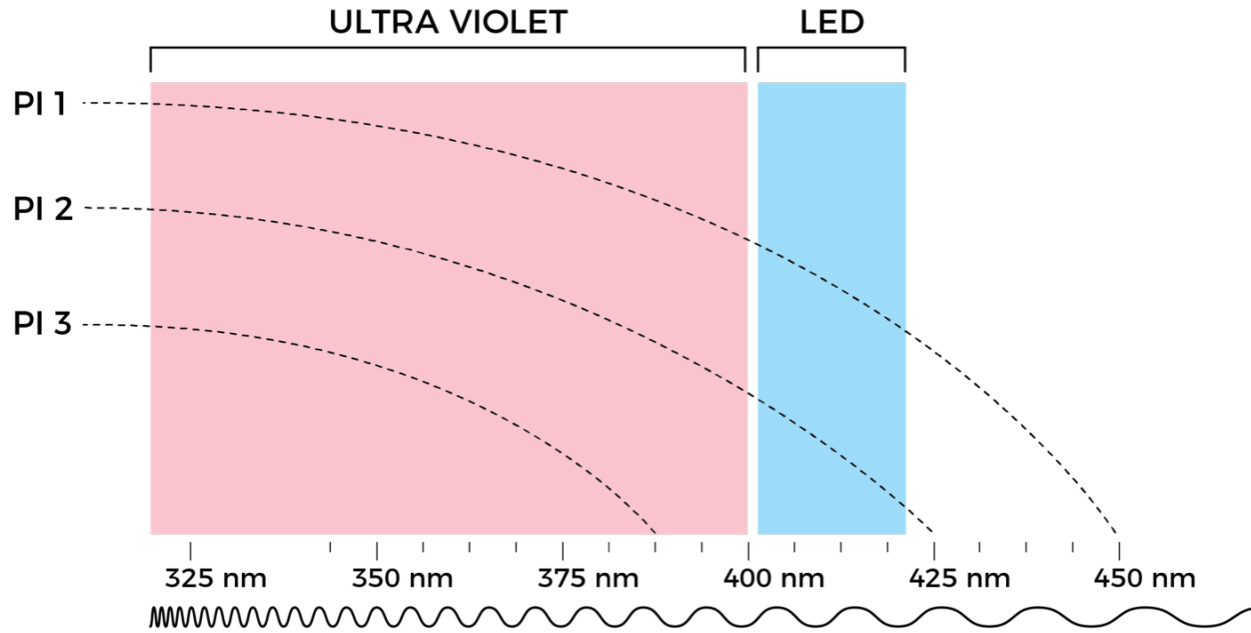
- 1 Are Expensive!
- 2 Are designed to cure in two ranges:
  - LED (Light Emitting Diode) 405 nm
  - \* UV (Ultra Violet) 365 nm
- 3 IBX BOOST utilizes a blend of Photo Initiators which cure in both the LED and UV Ranges (much like IBX)



# 2

Why Is  
IBX BOOST  
Different?

## IBX BOOST HAS A FULL SPECTRUM PI COVERAGE



# 2

Why Is  
IBX BOOST  
Different?

ADVANCES IN PI CHEMISTRY ALLOW US TO  
CURE IBX BOOST IN **ONE** MINUTE IN BOTH  
LED + UV!!!



# 2

Why Is  
IBX BOOST  
Different?

## WHICH LIGHTS HAVE BEEN USED SUCCESSFULLY WITH IBX BOOST?

We recommend a min of 30 watts and no more than two years old.

CND SHELLAC LED 4

OPI "FIRST GENERATION LED LAMP"

CND UV

LIGHT ELEGANCE LED PLUS+

SUNONE LED 48W

DASHING DIVA LED

LCN BASIC UV

KUPA LED

EN VOGUE LED

AKZENTZ HYBRID CURES BOTH LED AND UV

ARTISTIC LED PRO 36

ARTISTIC LED PRO 30

GELISH 18G



THE PRODUCTS OF  
THE IBX BOOST  
SYSTEM

IBX BOOST BASE 15 mL / .5 fl oz

IBX BOOST 16.5g / .5 oz

**IBX BOOST™**

PERFECTION OVER THE TOP



Before  
We  
Begin...

# 3

## Application of IBX BOOST



### THE CURING LAMP

- Is your lamp under two years old?
- Did you know as an LED lamp approaches its end of life, the output can fall as much as 50%.
- Does your lamps output exceed 30 watts?
- If you are uncertain about your curing lamp, we recommend double curing. Shift the finger position on the second cure.
- To insure completeness of cure, two thinner coats of IBX BOOST GEL are better than one.



# 3

## Application of IBX BOOST



### ADDITIONAL CONSIDERATIONS

- 1 Always cap the free edge.
- 2 Two thin layers are better than one thick one.
- 3 Use a 90% or higher IPA (the balance is water).
- 4 Always cure IBX BOOST BASE and IBX BOOST GEL for one full minute.
- 5 **NO** pre-buffing the natural nail is needed or recommended.
- 6 A #6 or 4 flat gel brush is recommended for application.



# 3

## Application of IBX BOOST



## IBX BOOST APPLICATION FOR 2 STEP GEL POLISHES THAT USE A BASE COAT

- 1** CLEANSE nails with Cinnatize using a lint free wipe.
- 2** Apply a **THIN** layer of IBX BOOST BASE over the nail, capping the free edge.
- 3** Cure in a UV or LED lamp for one minute. Do not cleanse.
- 4** Apply a **THIN** coat of IBX BOOST to the nail plate and glide the product over the entire nail (just like nail polish), capping the free edge. Allow the product to self level.
- 5** Cure in a UV or LED lamp for one minute.
- 6** For damaged or week nails we recommend a **THIN** second coat of IBX BOOST. Apply the second coat of IBX BOOST as in #4 and cure as in #5. Do not cleanse before applying this coat.
- 7** There are two options for Gel Polish application.  
**Option 1** - Go straight to your Gel Polish color coat. Do not remove the sticky layer. Do not buff the surface. Do not use the Gel Polish Base Coat. Always cap the free edge with the Gel Polish Color Coat.  
**Option 2** - Remove the sticky layer with 90% or higher IPA and then buff the surface with a 220 grit file. Apply the Gel Polish Base Coat as you normally would followed by the Gel Polish Color Coat.



# 3

## Application of IBX BOOST



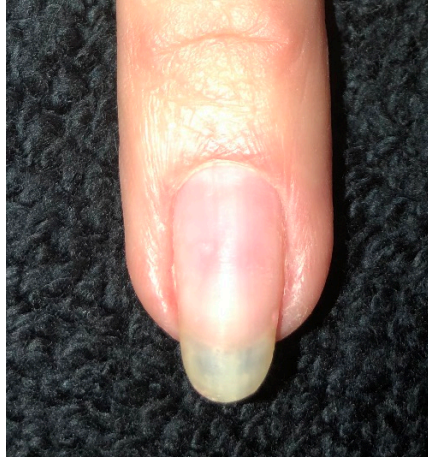
### IBX BOOST APPLICATION FOR ONE STEP GEL POLISH WITHOUT A BASE COAT OR NATURAL NAIL OVERLAYS

- 1** CLEANSE nails with Cinnatize using a lint free wipe.
- 2** Apply a **THIN** layer of IBX BOOST BASE over the nail, capping the free edge.
- 3** Cure in a UV or LED lamp for one minute. Do not cleanse.
- 4** Apply a **THIN** coat of IBX BOOST to the nail plate and glide the product over the entire nail (just like nail polish), capping the free edge. Allow the product to self level.
- 5** Cure in a UV or LED lamp for one minute.
- 6** For damaged or weak nails we recommend a **THIN** second coat of IBX BOOST. Apply the second coat of IBX BOOST as in #4 and cure as in #5.
- 7** Remove the sticky layer with 90% or higher IPA - buff the surface with a 220 grit file.
- 8** For Gel Polish - apply the Gel Polish Color Coat as you normally would.  
For Natural Nails - we recommend applying a top coat over IBX BOOST to prevent staining.



# 3

## Application of IBX BOOST



## IBX BOOST NATURAL NAIL RE-BALANCE INSTRUCTIONS

Start with a dry manicure so the cuticle is cleaned up and off the nail plate.

- 1 Lightly blend the contact area of the existing IBX BOOST to the new growth area.
- 2 Cleanse the new growth area with Cinnatize.
- 3 If needed, do your IBX treatment to the new nail growth area.
- 4 Apply a **THIN** layer of IBX BOOST BASE to the new growth area.
- 5 Cure in a UV or LED lamp for one minute.
- 6 Apply a **THIN** coat of IBX BOOST to the nail plate and glide the product over the entire nail (just like nail polish), capping the free edge. Allow the product to self level.
- 7 Cure in a UV or LED lamp for one minute.
- 8 For damaged or week nails we recommend a **THIN** second coat of IBX BOOST. Apply the second coat of IBX BOOST as in #4 and cure as in #5. Do not cleanse before applying this coat.
- 9 Cleanse with with 90% or higher IPA to remove sticky layer.
- 10 Optional: We recommend a top coat over IBX BOOST to enhance shine and prevent staining.



# 3

## Application of IBX BOOST



*"IBX Boost acts as removal insurance for efilers."  
- Elizabeth*

## IBX BOOST REMOVAL INSTRUCTIONS

- Use an acetone based remover.
- Buff the top surface of the nail coating to break the seal.
- Removal time:
  - With Gel Polish 5 - 15 minutes
  - On natural nails 7 - 12 Minutes

**Helpful Hint:** Add a few drops of Dadi'Oil to your acetone remover



# 3

Application of  
IBX BOOST

## KEYS TO SUCCESS

- 1 Prior to removal, break the top seal with a 220 grit file.
- 2 **NO** wet manicure prior to application.
- 3 Toe Nails? **YES!**
- 4 Apply Dadi'Oil to the underside of the natural nail.



# 4

Marketing  
IBX BOOST



## MARKET IBX AND IBX BOOST AS THE PERFECT NATURAL NAIL SUPPORT SYSTEM

- Add Dadi'Oil and Luxury Dadi' Lotion to complete the service.
- IBX and IBX BOOST only add 15 minutes to your gel polish service or your natural nail manicure and adds additional income.
- IBX BOOST Base gets approximately 100 full set applications.
- IBX BOOST Gel gets approximately 40-50 full set applications.
- Use IBX BOOST to bring back gel polish customers who could no longer wear it.
- IBX Boost is for that Natural Nail client that needs more than just IBX.



“ It makes my clients happy because they can have their own nails using IBX and IBX BOOST and with the support of IBX BOOST it allows them to have healthy nails and some length. ”

---

Maureen

“ Let me explain - if a product can sit pain free on my sensitive nail plates then it's worth much more for the salon. ”

---

Tracy

“ To promote healthy nail growth with IBX, IBX BOOST is perfect. I love this product for toe nail correction. ”

---

Mirka



# 5

## Other Products Offered By Famous Names Products





# We Are Social

Sign up for updates on our website

[FamousNamesProducts.com](http://FamousNamesProducts.com)



[Facebook.com/FamousNamesProducts](https://Facebook.com/FamousNamesProducts)



[@IBXNails](https://www.instagram.com/IBXNails)



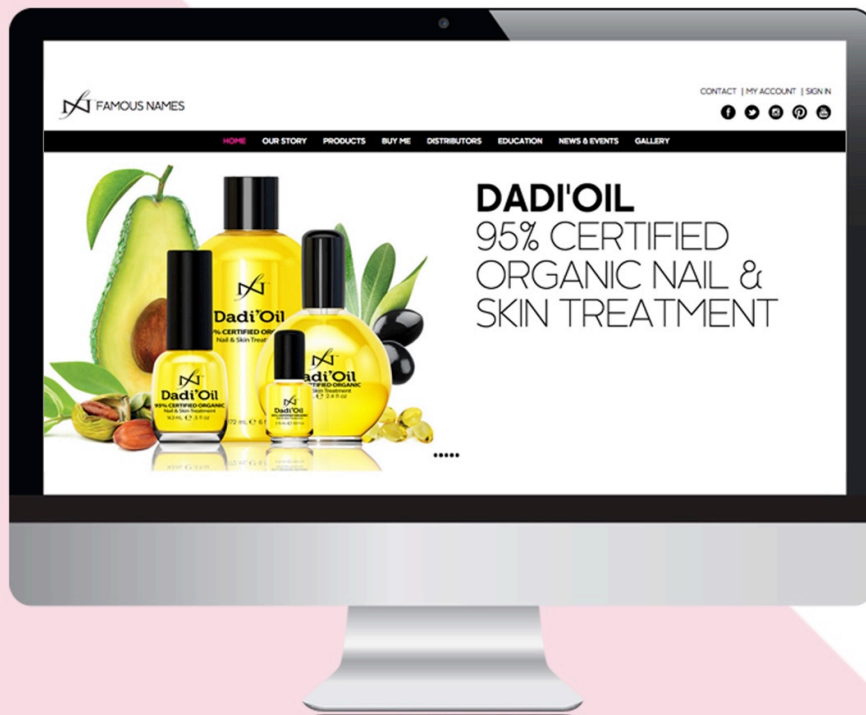
[@FamousNames](https://www.twitter.com/@FamousNames)



[Pinterest.com/FamousNamesLLC](https://Pinterest.com/FamousNamesLLC)



# Thank You!



FAMOUSNAMESPRODUCTS.COM

